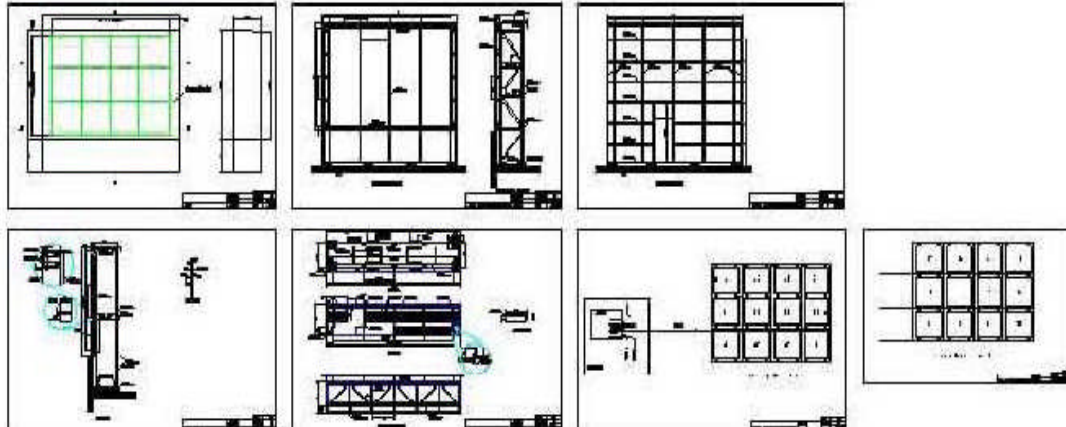




LED Display Installation

* We can provide the drawing of steel structure free of charge



* Installation steps



Step1



Step 2



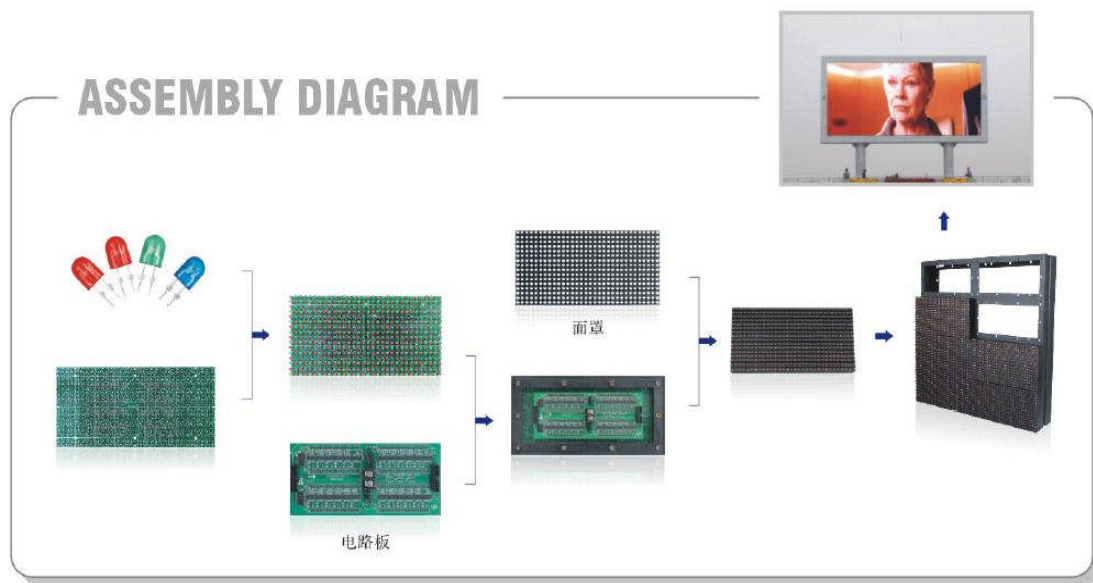
Step 3



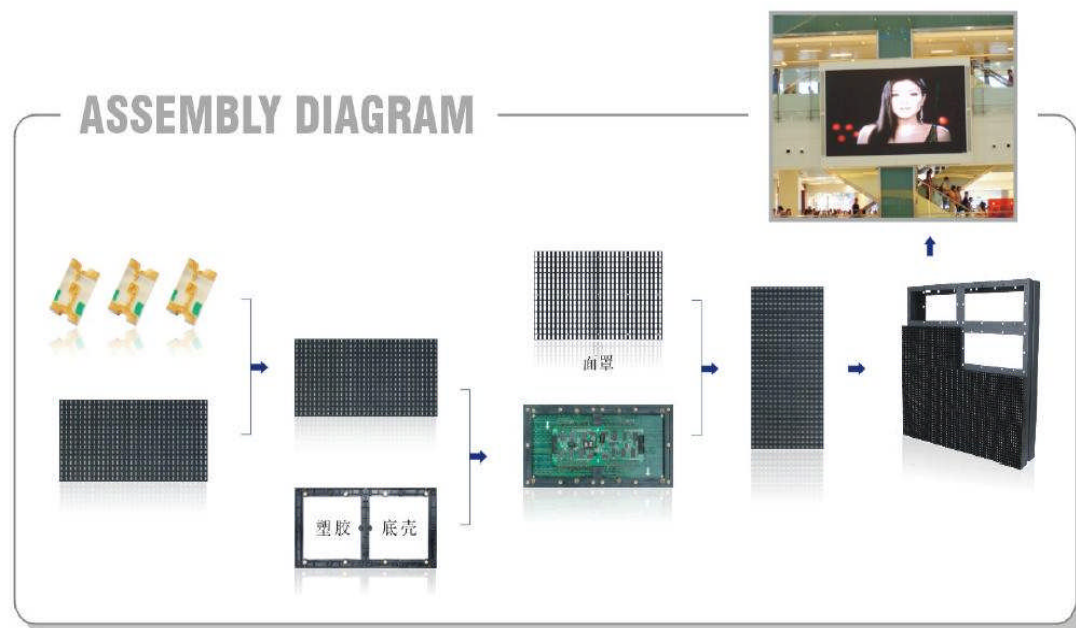
Step 4



* Outdoor display installation



* Indoor display installation





● Samples of our installed display

Information: cabinet size :1280X960X150 weight: 72kg/cabinet consumption:1.2kw/cabinet

Cabinet QTY: Length: 5pcs, width: 4pcs

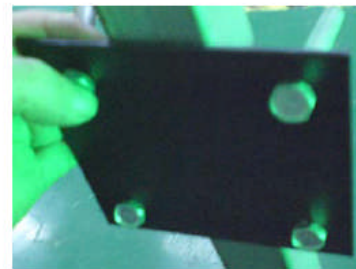
Screen size: 24.58 m² Screen weight: 1200kg Screen consumption: 25kw

Voltage: AC 220V \pm 10% 50Hz

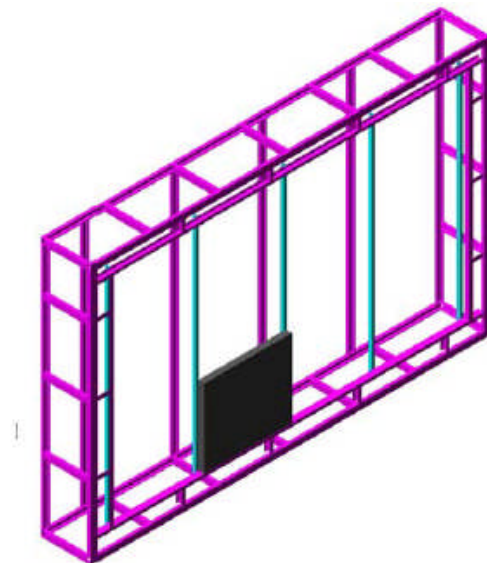
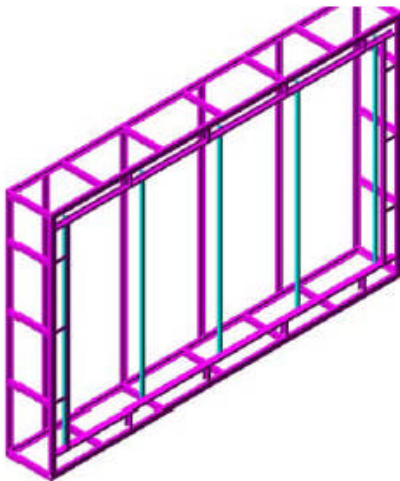
1. Screen installation:



Cabinet



Lock for connecting with each cabinet





Screen fixing frame
Connecting every cabinet and the order is as follows:

After fixing one cabinet

A1	A2	A3	A4	A5
B1	B2	B3	B4	B5
C1	C2	C3	C4	C5
D1	D2	D3	D4	D5

Screen back

2、 Power and signal connection

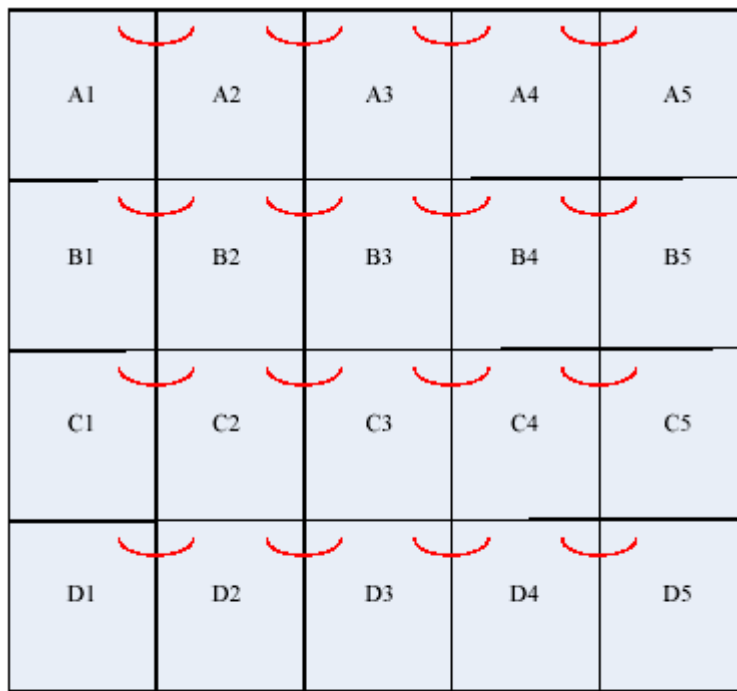



POWER LINE



SIGNAL LINE

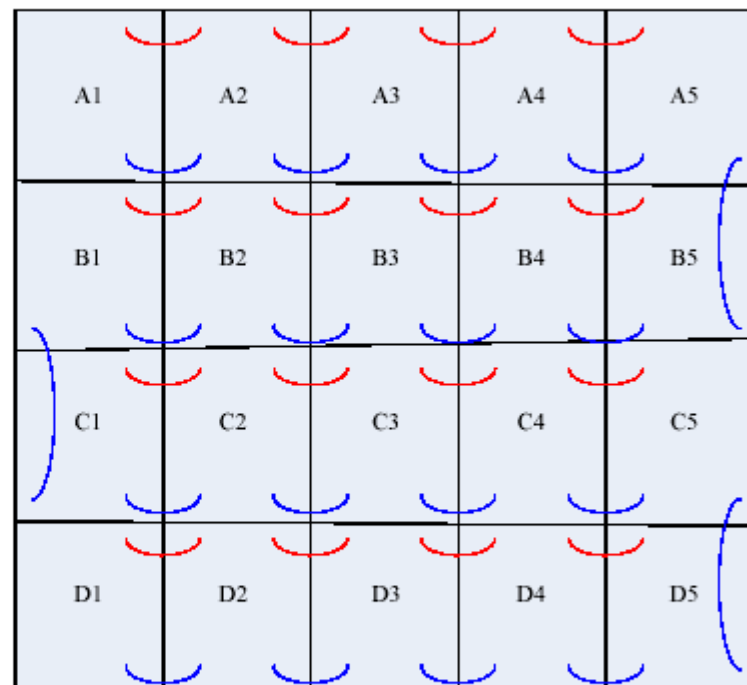
1): Connecting the power line for screen well, as shown in below.



 Power Line

Screen Back

2) : Connecting the signal line for screen well, as shown in below. .



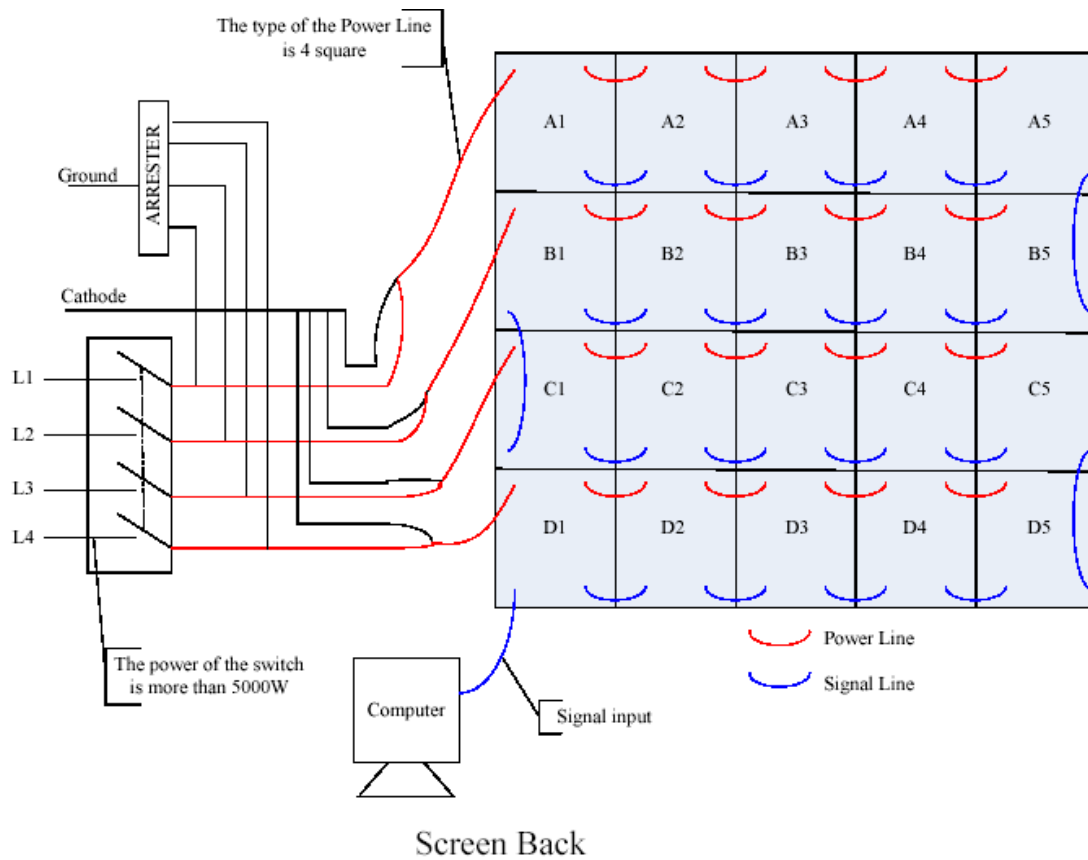
 Power Line

 Signal Line

Screen Back



3) : Connecting screen power (input line) and network cable (signal input):





3、 Graphic card, Sending Card installation and setup

Operating Environment

◆ **Operating system**

Chinese/English Windows98/me/2000/NT/XP

◆ **Hardware Configuration**

Pentium 300MHz or above

ROM: 64M

Graphics Card: Standard VGA 256mode or above

◆ **Related Software**

Microsoft Media player compulsory

OFFICE2000—in case of *. doc files

RealPlayer—in case of RealPlayer files

Operation steps:

- 1、 Put graphic card with DVI output into motherboard slot before starting PC



Sending card



Graphic card with DVI output



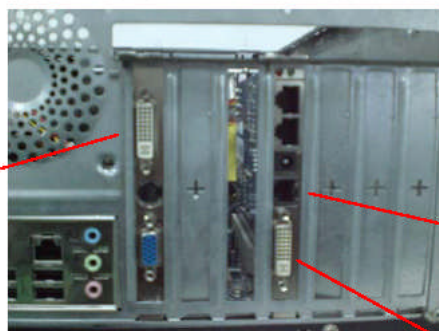
DVI LINE



RS232 LINE

- 2、 Turn on PC
- 3、 Enter graphic card installation directory, and then choose the correspondent graphic card drive, and then double click to install it according to the instruction.
- 4、 After finish the installation, please close the PC by hand.
- 5、 After closing the PC, please put the sending card into PCI slot in motherboard.(Please don't use the DVI cable to connect Sending card with graphic card before starting the PC.)

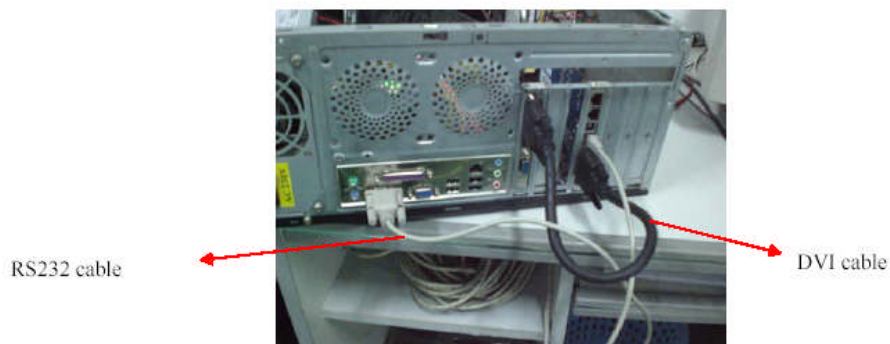
DVI port



Serial port



- 6、 Turn on PC
- 7、 Connecting sending card with graphic card through DVI cable, and combining sending card with PC serial port through serial cable (RS232)
DVI port



- 8、 Graphic card setup
- A、 Click on right key on the blank of desktop, there will be “Option”, as shown in figure 3-6



Figure 3-6

- B、 Click on “Property”: there will be “Property” dialog box (as shown in figure 3-7);

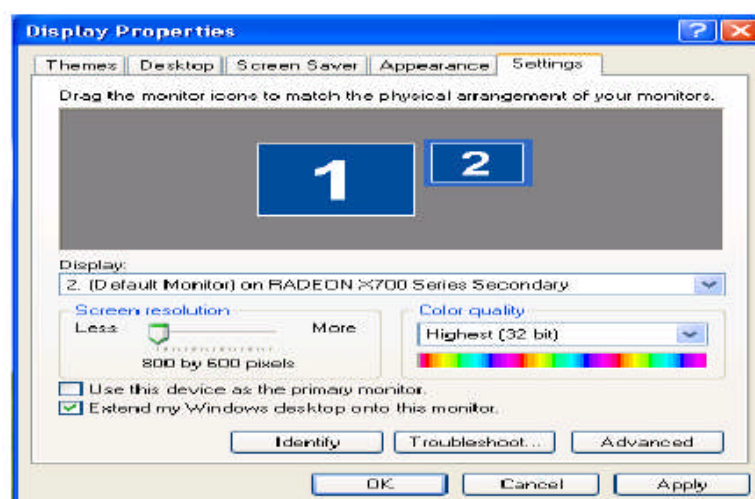


Figure 3-7



C、click on “Option”, then click on “Advanced” button, after appearing “Advanced” dialog box, click on “Display” button, as shown in figure 3-8,

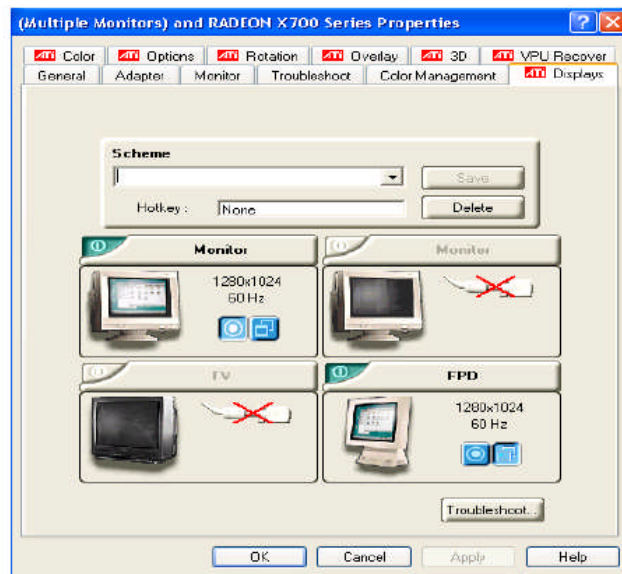


Figure 3-8

There will be a red triangle button beside the left of FPD, after click on it, the color becomes green, and then click on “Apply” button.

D、Click on “Overlay” button in the Advanced property as shown in figure 3-9

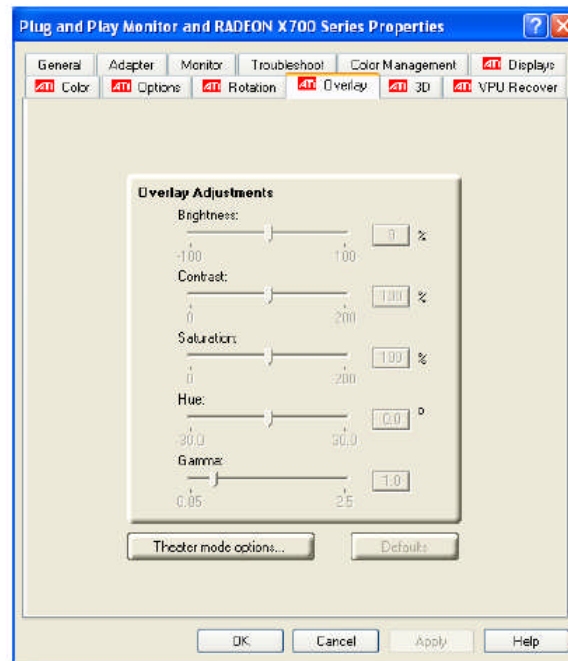


Figure 3-9

E、click on “Copy mode options”, as shown in figure3-10, select “Same on all”, then click on “Apply” button is ok.

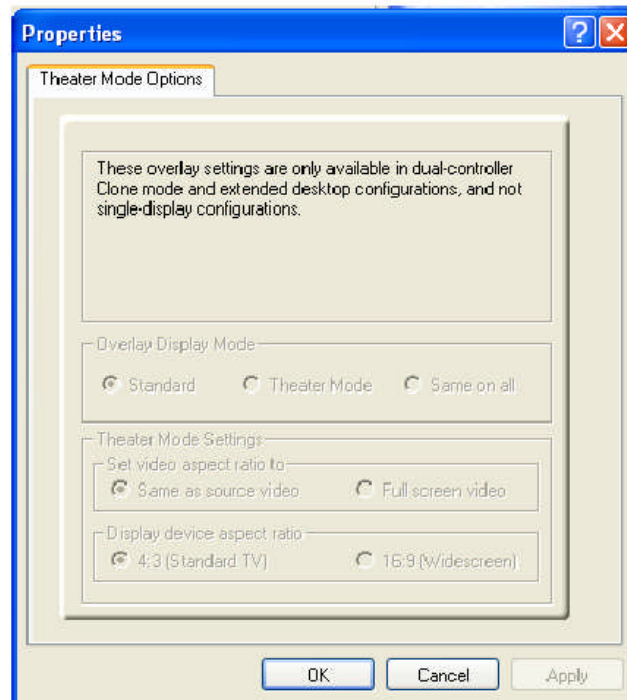


图 3-10

4、LED studio installation

1). Please insert Led studio CD into PC CD-COM, and will pop-up installation dialog box. (If no dialog box pop-up, please double click the CD after select it.) As shown in below figure 4-1.



Figure 4-1



2). Choose "Install Led studio" to start installation guidance, as shown in below figure 4-2. And the serial no. is 888888.

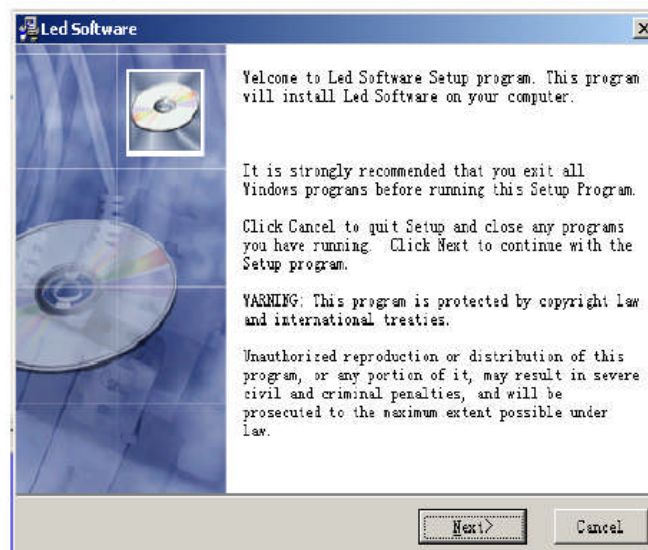


Figure 4-2

3. After "LED Studio" software has been successfully installed, there will be a "LED Software" program group in the **【Start】/【Program】**, then move to the "LED Software" under this program group, click to start. As shown in figure 4-3 Also, there will



be a "LED Studio" short-cut on your desktop: as shown in figure 4-4. Also, you can start the program by double click on the icon.



Figure 4-4

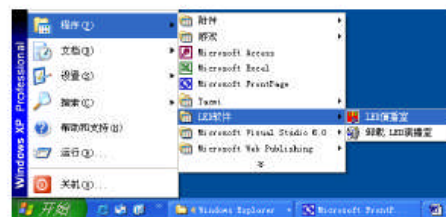


Figure 4-3

5、Screen parameters setup

1) Open software setup

Click "Option" in the main menu, and click "software setup", will pop-up a dialog box, as shown in figure 5-1,

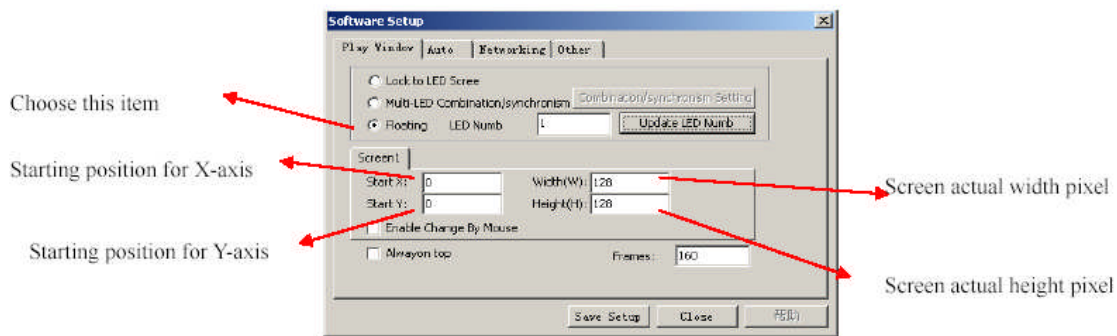


Figure 5-1

2). After finishing the parameters, please click “save setup”.

6. About the usage for Led software, please refer to 《Led studio user manual》

7. FAQ and Solutions

1) **Questions:** All LEDs blink.

Answer: poor contact ;

Solution: Firmed or plug again in the unfixed point;

2) **Questions:** LED weak;

Answers: 1、Opposition polarity of LED

2、Longer pins of LED;

3、Switch power is different from the voltage marks of LED;

Solutions:

1、Ensuring right connection of positive pole and negative pole;

2、Decreasing the connection of LED;

3、Making sure switch power as same as the voltage marks of LED.

3) **Question:** Some LEDs are black;

Answers: 1、Check whether connection direction is right;

2、Check whether power supply output cable is corrector;

3、Check whether plug way of power supply is opposite.

Solutions: 1、Plug it in the correct direction;

2、Make sure the red line with the positive pole, black line with the negative pole;

3、Finding some part opposition line and connect them again.;

4) **Question:** All LEDs are off.;

Answers: 1、No power output from the power supply;

2、The power supply cable output is right or not;

Solutions: 1、Assembling power plugged it into switch power input port;

2、Check the pole of power supply is right.

5) **Question:** Green LED in sending card doesn't not glitter;

Answers: DVI cable is not plugged tightly

Solutions: Plug the DVI cable tightly.